

FOR LEASE
20,000 SF WAREHOUSE
NEAR ORLANDO INTERNATIONAL AIRPORT



9101 PARKERS LANDING, ORLANDO, FL

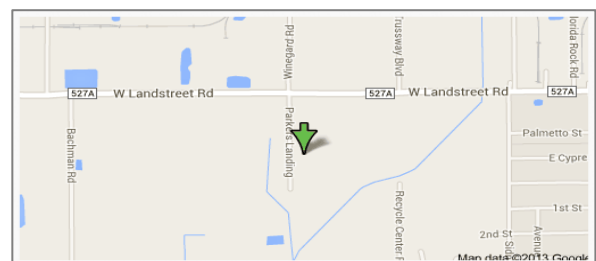


Lease Rate: \$5.50/SF NNN

Property Details:

- Total Building Size: 40,000SF
- Available Space: 20,000 SF Clear Span
Office: 4,480 SF Office space
- Land Size: 2.84 Acres
- Construction: CBS & Steel
- Dock Doors: 5 Grade Level
Oversized 14'W x 16'H
- Ceiling Height: 28' – 31'
- Column Spacing: 90'D x30'W
- Building Depth: 180'
- Parking: Ample (40+ lined spaces)
- Sprinkler: Class IV Commodities
- Power: 800 Amp / 3-Phase / 480V

- ◆ Parcel ID#: 02-24-29-8220-00-240
- ◆ Property Taxes: \$31,791 (2013)
- ◆ Year Built: 2001
- ◆ Zoning: I-2/I-3 Orange County
- ◆ Located near Orlando Int'l Airport



Cory Kroeger
Mobile: 407.402.8581
cory@krprop.com

Greg Rebman
Mobile: 407.921.7366
greg@krprop.com

KR PROPERTIES, LLC

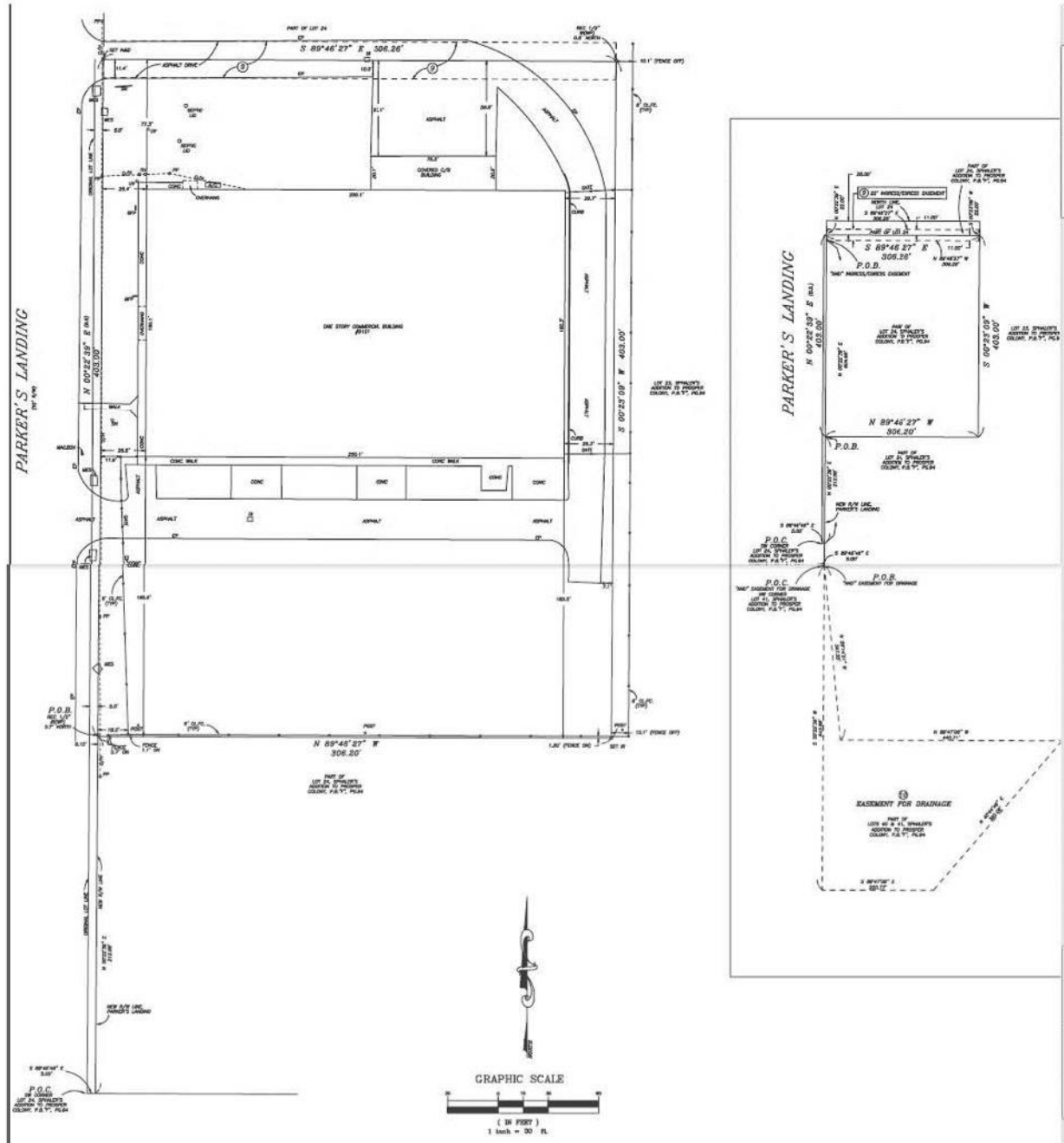
1053 N. Orlando Ave. Suite 4, Maitland, FL 32751
Phone: 407.696.3088 · Fax: 407.696.3089
www.krprop.com

FOR SALE OR LEASE

20,000 OR 40,000SF WAREHOUSE WITH OUTSIDE STORAGE



9101 PARKERS LANDING, ORLANDO, FL - SURVEY



Cory Kroeger
Mobile: 407.402.8581
cory@krprop.com

Greg Rebman
Mobile: 407.921.7366
greg@krprop.com

KR PROPERTIES, LLC
1053 N. Orlando Ave. Suite 4, Maitland, FL 32751
Phone: 407.696.3088 · Fax: 407.696.3089
www.krprop.com

*Details contained herein are deemed to be reliable but cannot be warranted by KR Properties or the seller. Subject to errors, omissions, prior sale or withdrawal without notice.