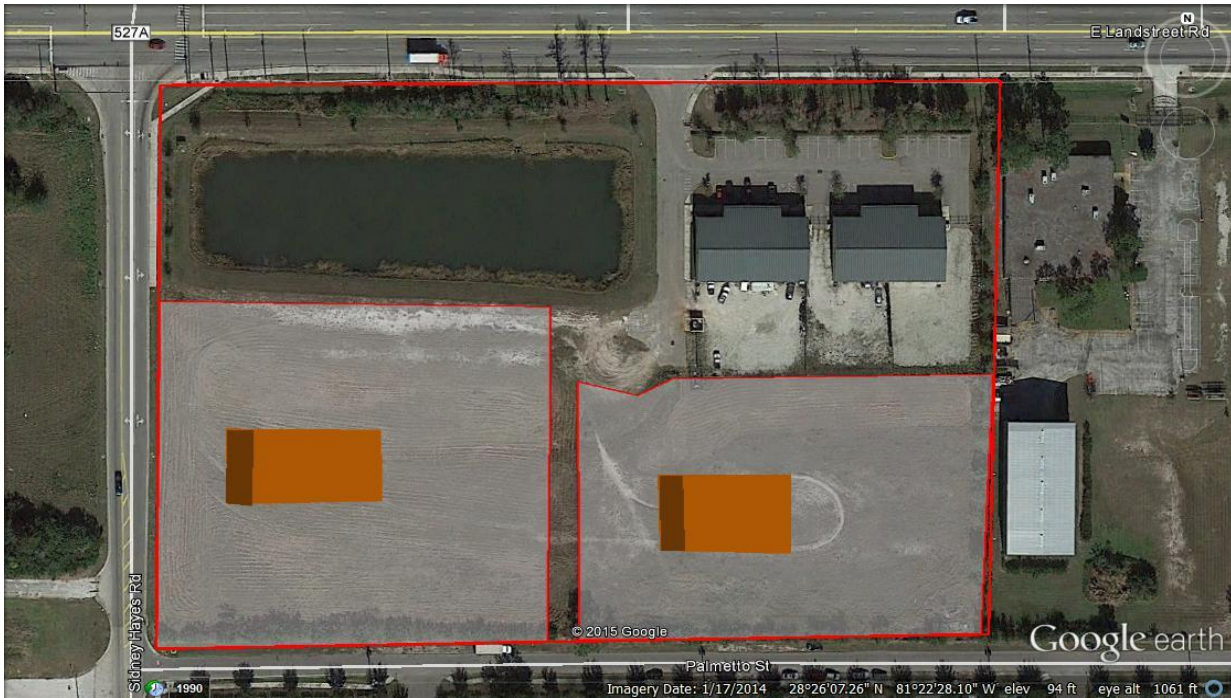


FOR LEASE
TWO BUILD TO SUIT SITES
GRADE LEVEL WITH OUTSIDE STORAGE



158 E. LANDSTREET ROAD; ORLANDO, FL 32824

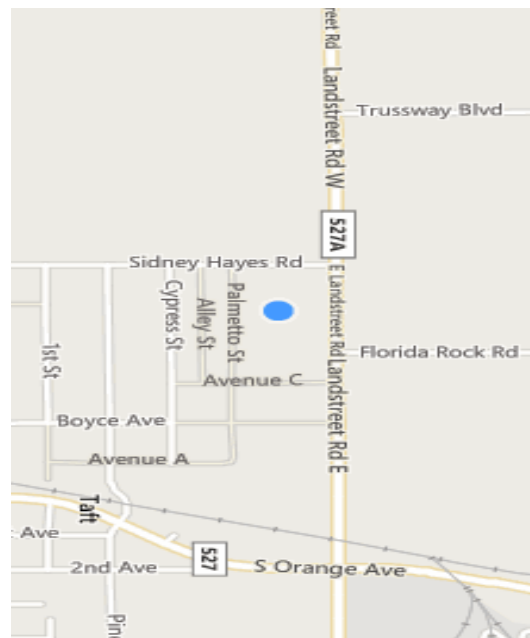


Proposed Buildings:

- Approximately 10,000 SF (70' x 143')
- Grade Level, Clear Span
- Three 14' x 14' Drive Thru Bays (6 Doors Total)
- 20 FT Clear Height
- Office: 1,500 SF to Suit
- Optional Wash Bay if Required

Proposed Sites:

- Buildings will be on 2 to 2.5 Acres
- Ingress/Egress from Landstreet and Sidney Hayes
- Zoned I-2/I-3 Orange County
- Close Proximity to Fla Turnpike/SR 528 Exchange, Interstate 4, O. I. A. and Convention Center



Cory Kroeger
Mobile: 407.402.8581
cory@krprop.com

Greg Rebman
Mobile: 407.921.7366
greg@krprop.com

KR PROPERTIES, LLC
1053 N. Orlando Ave. Suite 4, Maitland, FL 32751
Phone: 407.696.3088 · Fax: 407.696.3089
www.krprop.com